

Gwent Test, Trace & Protect Service – Gwent Public Service Board Report

PRESENTERS:

ERYL POWELL

RACHEL JOWITT

JULIAN BOWEN-SARGENT

Contents

1. GTTPS Governance
2. Gwent TTPS Performance
3. GTTPS Workforce update
4. Coordination Unit Update
5. Regional Cell Delivery Programme Update
6. Key Risks Identified
7. GTTPS Leadership Group Decisions
8. Recommendations
9. Appendix 1 – Current GTTPS Governance Structure
10. Appendix 2 – Case Demand Graphs

1 GTTPS Governance

G10 was formerly the Regional Board for the Gwent Test, Trace & Protect Service (GTTPS) responsible for:

- Ensuring the Service is delivering against its stated purpose, aims, objectives and principles
- Representing the interests of their respective organisations
- Agreeing the financial framework
- Ensuring effective governance, leadership and management of the Service
- Ensuring the effective planning and delivery of the Service
- Scrutinising the performance of the Service
- Ensuring the Service is operating in alignment and complimenting wider Covid-19 strategies
- Promoting the interests of the Service to national partners

Recommendation – Gwent Public Service Board is asked to agree to take responsibility for the governance and oversight of GTTPS, which will transfer from G10

2 Gwent TTPS Performance

- The move to Alert Level 0 (Zero) has significantly impacted the ability to contact trace within 24 hours:
 - 17th July – 8th August % of Eligible cases followed up within 24hrs = 90.4%
 - 17th July – 11th September % of Eligible cases followed up within 24hrs = 58.7%
- Levels of community transmission have increased which has significantly increased the daily index case demand from c.125 cases per day in early July to c.475 cases per day in mid-September (see Appendix 2)
- Quantity of daily contacts demand has increased significantly with c.350 contacts per day in early July to c.725 per day in mid-September (see Appendix 2)
- The end to end performance measure (% of contacts successfully followed up within 24hrs of entering queue) for Gwent reduced from 45% (17th July to 7th Aug) to 20% (8th Aug to 11th Sept)

3 Gwent TTPS Workforce

- Leadership agreed virtually on 20/9/21 to increase tracer workforce by 5 x FTE, as spillage funding was available

| | Plan Sept 21 | Actual LA WTE Sept 21 | Short WTE Sept 21 |
|----------|---------------------|------------------------------|--------------------------|
| Tracers | 155.81 | 133.90 | -21.91 |
| Advisors | 150.73 | 121.81 | -28.92 |

- Additional workforce decisions made by Leadership Group since the last update are noted on p18 within report

4 Coordination Unit Update

- Continues to provide 7 day operational cover to support local TTP Teams.
- Continue to support Gwent and national approach to Mutual Aid for Index Cases and Contact Cases
- Created and implemented the Gwent Prioritisation and Service Level Framework, which formed the basis Welsh Government National Prioritisation Approach.
- Continued collaboration with the ABUHB RCDP on Gwent Risk Management Approach.
- Ongoing programme management support to the Gwent IG Forum, GTTPS Working Group and GTTPS Leadership Group.
- Leading on the GTTPS Communication Plan and delivery of the BAME Engagement Plan.
- Contribute to the 3 WG working groups to prepare GTTPS for the winter.

5 Regional Cell Delivery Programme Update (RCDP)

Provides Programme Management and Public Health expertise and support for Local IMT, Gwent IMT & Regional Oversight Group.

| ABUHB Staff Wellbeing Cell | Clinical Leads | Data & Surveillance Cell | Enclosed Settings Cell | Public Health Consultants & Incident Practitioners |
|-----------------------------------------------------------------------------------------------------------------------------------------------|--------------------------------------------------------------------------------------------------------------------------------------------------|-------------------------------------------------------------------------------------------------------------------------------------------------|---------------------------------------------------------------------------------------------------------------|--------------------------------------------------------------------------------------------------------------|
| <ul style="list-style-type: none"> Contact tracing for ABUHB staff and inpatients Supports arriving traveller process | <ul style="list-style-type: none"> Resolve escalations from across the GTTPS Support Enclosed Settings Cell out of hours | <ul style="list-style-type: none"> Produces data and surveillance reports Responds to escalations to CRM regional queue | <ul style="list-style-type: none"> Provides advice, surveillance and support for care settings | <ul style="list-style-type: none"> Provide specialist advice and support to IMTs, wider GTTPS |
| 255 successful staff traces (Jun-Aug) | 3,146 escalations resolved (25 th May – 31 Aug) | 7,500 escalations actioned Jun-Aug | 27 care homes in incident 30 th Sep | |

6 Key Risks

- Variants of concern (VOC) and increasing transmission of VOC's within Gwent
- Waning vaccine efficacy over time
- Inability to sustain specialist workforce over a prolonged period
- National Surge Team unable to cope with arriving traveller demand
- Reduction in adherence to TTP advice and guidance provided to index cases and contacts
- New school guidance being appropriately applied in education settings
- Welsh Government Interim Prioritisation Framework
- Key skills, knowledge and relationships from local business lost due to workforce changes

7 GTTPS Leadership Group Decisions

24th July

- To extend all TTP contracts to the 31st March 2022.
- For the Regional Oversight Group to take operational decisions to meet the demand.
- To start the recruitment process to increase the workforce to 150 WTE of Tracers and Advisors from the 1st September 2021.

19th August

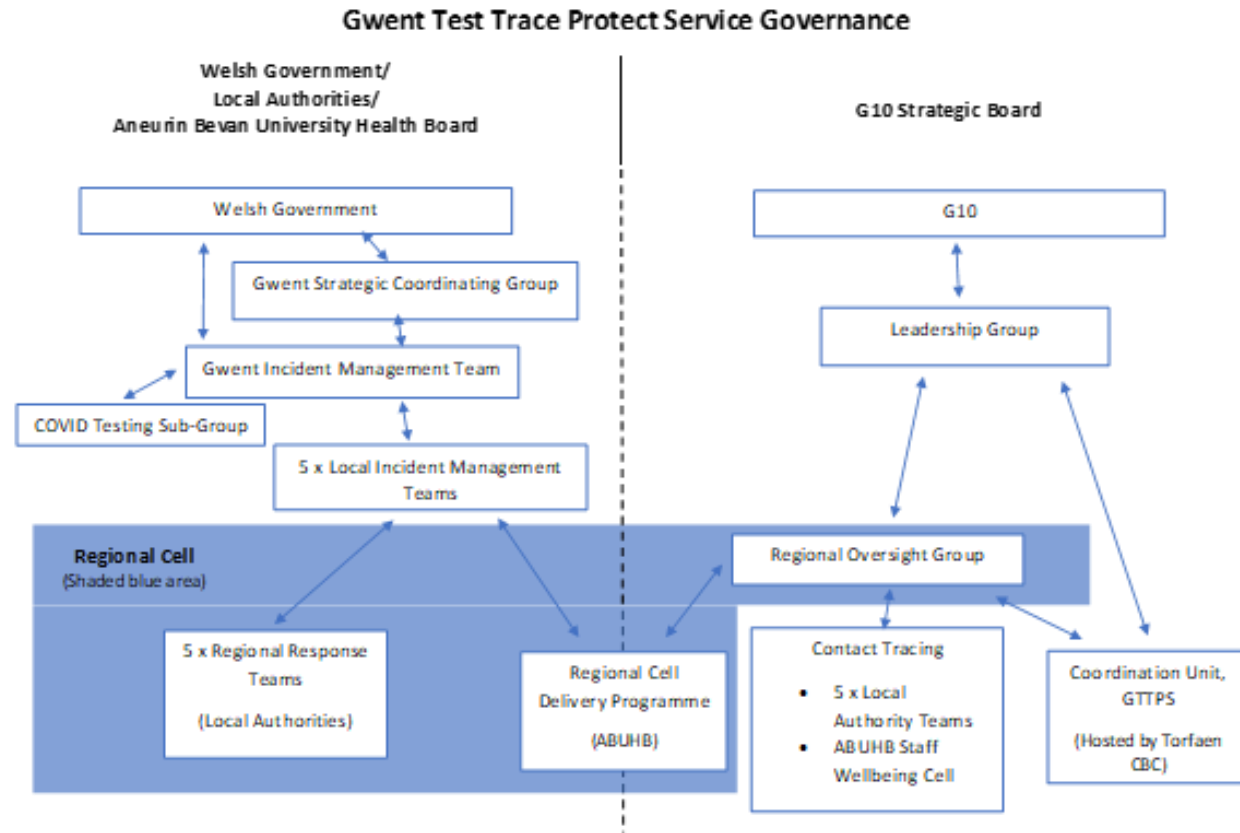
- To increase Monmouthshire Tracers minimum WTE by 2.0 to meet the increase in demand.
- Agreement was made to bring forward the start dates of newly recruited Tracers and Advisors that have cleared pre-employment checks and were available to start ahead of the 1st September 2021.

8 Recommendations

Gwent Public Service Board is asked to:

- Agree to take responsibility for the governance and oversight of GTTPS, which will transfer from G10.
- Endorse the decisions made by the GTTPS Leadership Group.
- Note and support the activity undertaken by the GTTPS in the last quarter.

Appendix 1 – Current governance structure



Appendix 2 – Case Demand graphs

